



# MARKHAM STOUFFVILLE HOSPITAL REDEVELOPMENT PROJECT

A YEAR IN REVIEW



We broke ground on December 16, 2010



# We get out of the ground



February 2011 Foundation Work



March 2011 Columns to 2<sup>nd</sup> Floor

# Concrete slab pours continue



May 2011 2<sup>nd</sup> Floor Slab Concrete Pour



June 2011 South Parking Lot

## The structure rises to level 3



June 2011 2<sup>nd</sup> Floor Slab Concrete Pour



July 2011 1<sup>st</sup> Floor Elec, Mech & Studding

# Exterior cladding progresses



September 2011 2<sup>nd</sup> Floor Rough In



October 2011 Brick and Curtain Wall west elevation

# Mechanical and Electrical Work progresses



November 2011 Penthouse  
Mech Equip



November 2011 2<sup>nd</sup> Fl Mech Elec &  
Studding

# Getting the building closed in

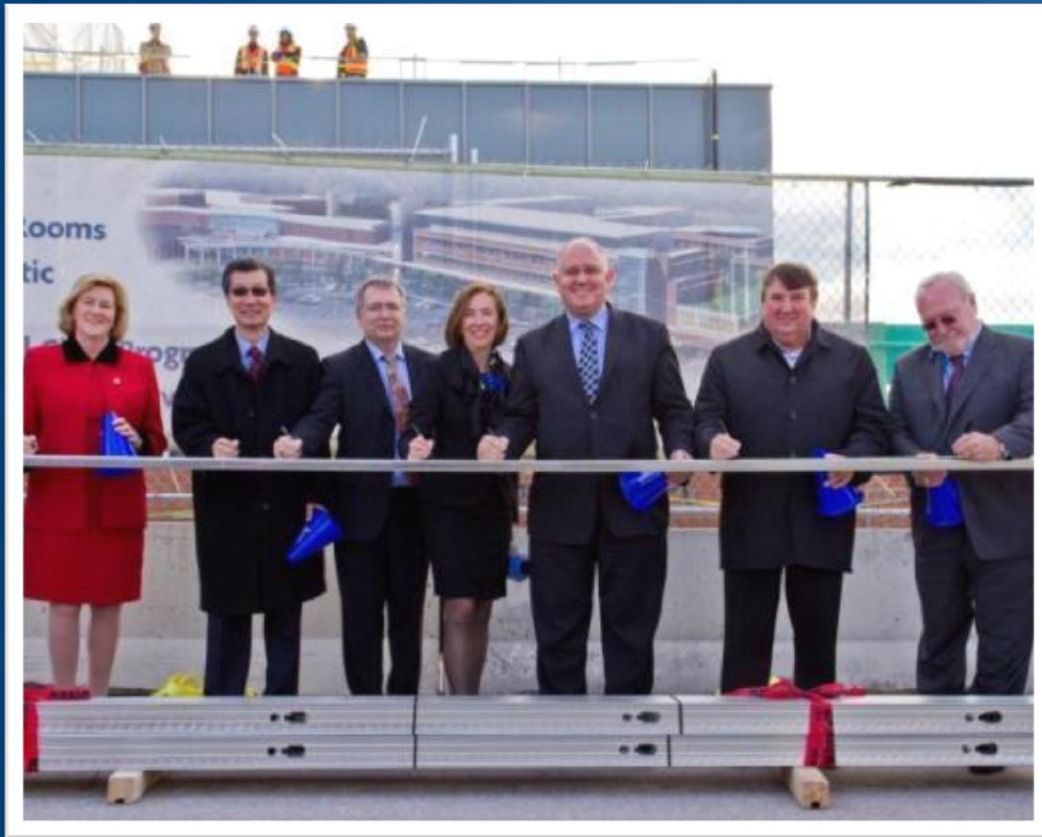


November 2011 South MH Curtain Wall

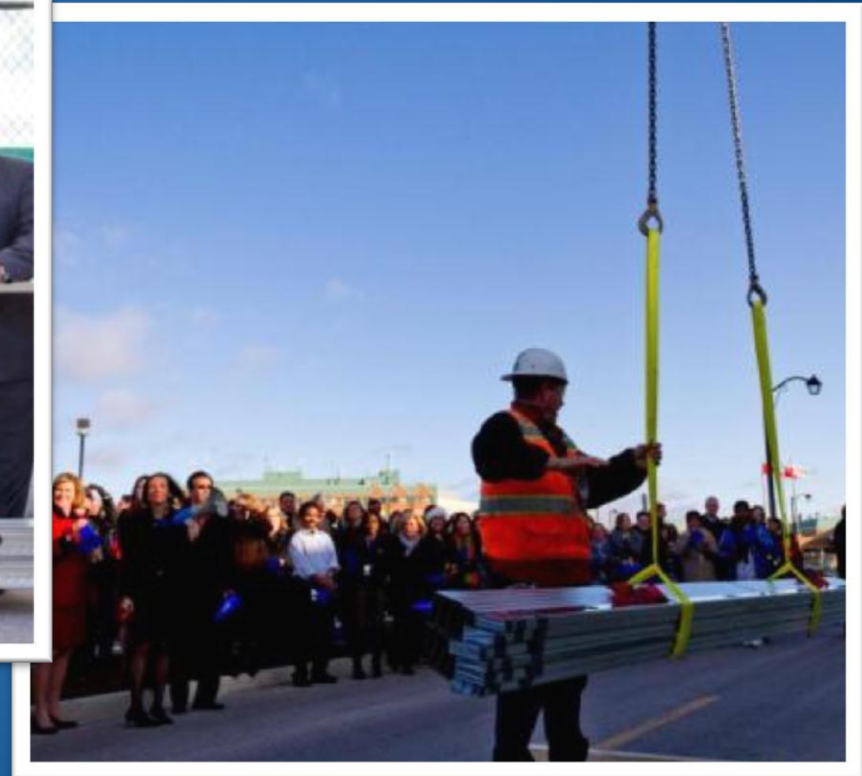


December 2011 West Curtain Wall

# Topping Off Ceremony



December 2011 Signing the studs



December 2011 Raising the studs

# A Look Ahead.....

- Move in date in early 2013
- Volume and services will remain the same
- Extensive renovations to the existing building begin
- Renovations complete – August 2014

# QUESTIONS

